



FULL-KEYED (SPOT-KEYED) SHAFTING

SHAFT TURN DOWN SERVICES

MISC. VOLUME FABRICATION

COMPLETE ASSEMBLIES

TAKE UP FRAMES

**AVAILABLE AT
JAMIESON
EQUIPMENT CO.**

OUR MISSION

Versa-Mount is committed to becoming the leading manufacturer Of steel fabricated and conveyor components, that exceed industry Standards. We are committed to expanding into new markets and High quality products that exceed our customer's expectations.

sales@versa-mount.com
accounting@versa-mount.com

Toll Free: 1-800-352-2727
 Ph: 770-942-6335
 Fax: 770-942-4374

FULL-KEYED SHAFTING

Versa-Mount stocks all sizes of shafting and has many types from which to choose. The types are as follows: 1018 cold rolled, 1045 TGP, 4140, 1144 stress proof (Heat Treated), 303 TGP stainless steel, 304 stainless steel, carbon and alloy steel up To 20'/24' in length. Larger diameters available upon request. In addition, we stock the most common metric diameters (20mm to 65mm) up to 20' in length. As indicated most of these sizes are in stock and can be shipped the same day. Specialty items are available. Call Versa-Mount @ 1-800-352-2727 for pricing. Please ask about our pre-paid and allowed freight program.

<u>SHAFT DIA./IN</u>		<u>BENEFITS OF USING TOTAL LENGTH FULL-KEYED SHAFTING</u>	<u>SHAFT LENGTHS IN STOCK</u>
3/8	2	1. Reduce expensive down time!	3 Ft.
1/2	2-1/8	2. No need to save the old shaft for a pattern!	4 Ft.
5/8	2-3/16	3. No need to take an assembly apart in order to measure keyway locations	6 Ft.
3/4	2-1/4	4. Tolerances on the O.D. and in the keyway are held very close!	8 Ft.
7/8	2-3/8	5. No need for sample shafts or drawings!	10 Ft.
15/16	2-7/16	6. FULL-KEYED SHAFTING is less expensive!	12 Ft.
1	2-1/2		20 Ft.
1-1/8	2-11/16		24 Ft.
1-3/16	2-3/4		
1-1/4	2-15/16		
1-5/16	3		
1-3/8	3-1/4		
1-7/16	3-7/16		
1-1/2	3-1/2		
1-5/8	3-15/16		
1-11/16	4-7/16		
1-3/4	4-15/16		
1-7/8	5-7/16		
1-15/16			

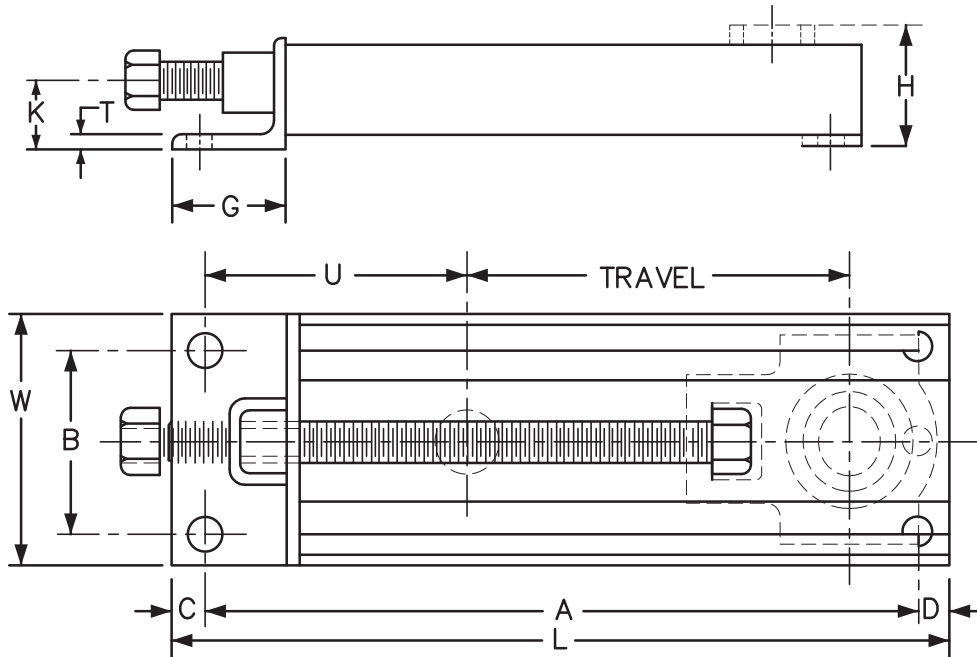
*Larger diameter available upon request. Call for quote.

sales@jamiesonequipment.com
www.jamiesonequipment.com
 Toll Free 800.875.0280



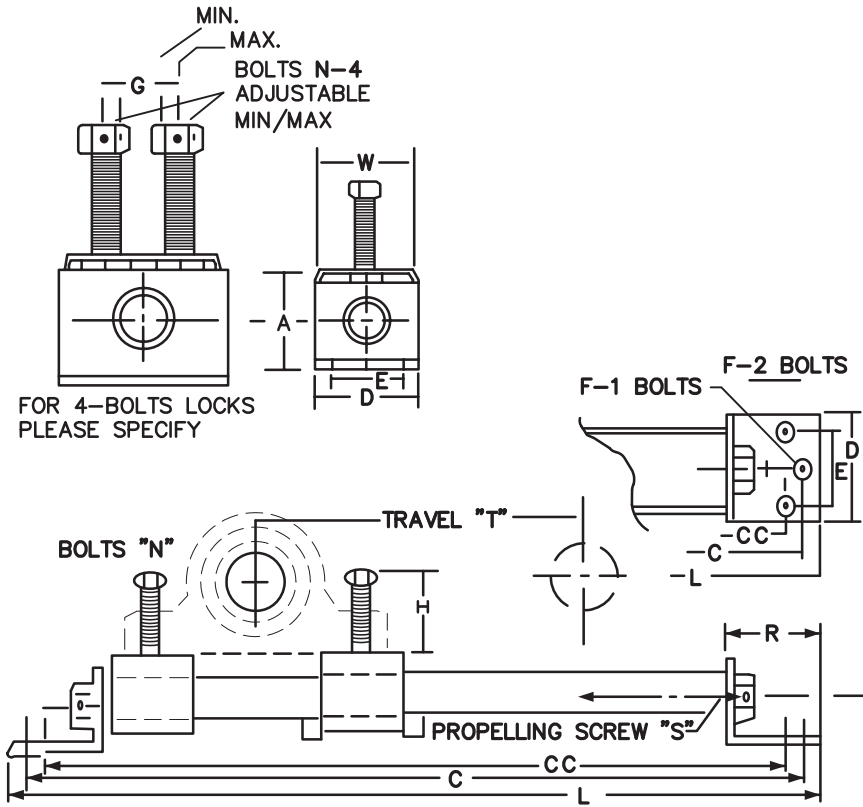
TAKE UP FRAMES

VTB FRAMES EQUIVALENT TO BROWNING 200 SERIES



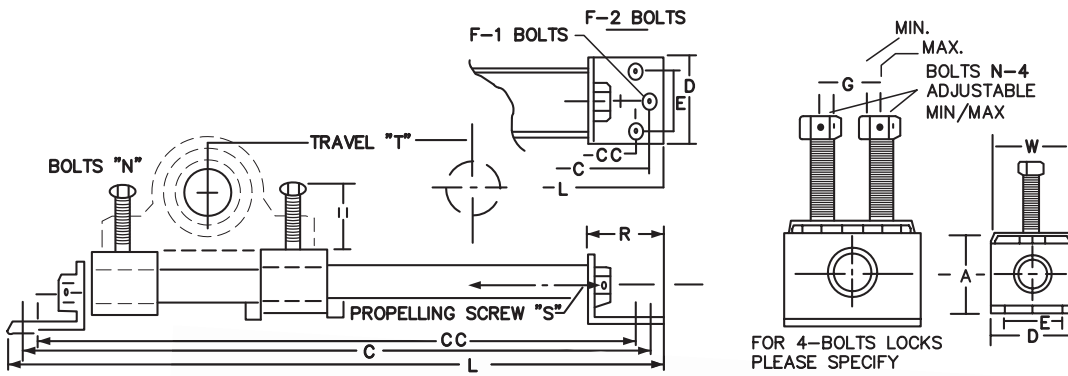
PART NUMBER	BORE RANGE	GENERAL DIMENSIONS - INCHES												HOLES		APPROX WT. (LBS.)
		TRAVEL	L	W	A	B	C	D	G	"H" MAX	K	S	T	No.	SIZE	
VTB1	1/2-1	1-1/2	7	4-1/16	6	3-3/16	1/2	1/2	1-1/2	2-7/16	1-3/8	5/8	1/4	3	9/16	3.3
VTB2	1/2-1	3	8-1/2	4-1/16	7-1/2	3-3/16	1/2	1/2	1-1/2	2-7/16	1-3/8	5/8	1/4	3	9/16	3.9
VTB3	1/2-1	6	11-1/2	4-1/16	10-1/2	3-3/16	1/2	1/2	1-1/2	2-7/16	1-3/8	5/8	1/4	3	9/16	5.1
VTB4	1/2-1	9	14-1/2	4-1/16	13-1/2	3-3/16	1/2	1/2	1-1/2	2-7/16	1-3/8	5/8	1/4	3	9/16	6.2
VTB5	1-3/16 - 1-7/16	3	9-3/8	4-11/16	8-3/8	3-11/16	1/2	1/2	1-1/2	2-5/8	1-3/8	3/4	1/4	3	9/16	5.4
VTB6	1-3/16 - 1-7/16	6	12-3/8	4-11/16	11-3/8	3-11/16	1/2	1/2	1-1/2	2-5/8	1-3/8	3/4	1/4	3	9/16	6.7
VTB7	1-3/16 - 1-7/16	9	15-3/8	4-11/16	14-3/8	3-11/16	1/2	1/2	1-1/2	2-5/8	1-3/8	3/4	1/4	3	9/16	8.1
VTB8	1-3/16 - 1-7/16	12	18-3/8	4-11/16	17-3/8	3-11/16	1/2	1/2	1-1/2	2-5/8	1-3/8	3/4	1/4	3	9/16	9.5
VTB9	1-1/2 - 1-15/16	3	11	5-1/16	9-7/8	3-1/16	1/2	5/8	1-1/2	3-1/8	1-5/8	1	1/4	4	9/16	7.4
VTB10	1-1/2 - 1-15/16	6	14	5-1/16	12-7/8	3-1/16	1/2	5/8	1-1/2	3-1/8	1-5/8	1	1/4	4	9/16	9.1
VTB11	1-1/2 - 1-15/16	9	17	5-1/16	15-7/8	3-1/16	1/2	5/8	1-1/2	3-1/8	1-5/8	1	1/4	4	9/16	10.8
VTB12	1-1/2 - 1-15/16	12	20	5-1/16	18-7/8	3-1/16	1/2	5/8	1-1/2	3-1/8	1-5/8	1	1/4	4	9/16	12.5
VTB13	1-1/2 - 1-15/16	18	26	5-1/16	24-7/8	3-1/16	1/2	5/8	1-1/2	3-1/8	1-5/8	1	1/4	4	9/16	15.9
VTB14	2 - 2-7/16	9	18-1/4	6-3/8	16-7/8	4-1/8	5/8	3/4	2	3-11/16	1-7/8	1-1/4	5/16	4	11/16	20.0
VTB15	2 - 2-7/16	12	21-1/4	6-3/8	19-7/8	4-1/8	5/8	3/4	2	3-11/16	1-7/8	1-1/4	5/16	4	11/16	22.8
VTB16	2 - 2-7/16	18	27-1/4	6-3/8	25-7/8	4-1/8	5/8	3/4	2	3-11/16	1-7/8	1-1/4	5/16	4	11/16	28.2

TOP MOUNT



SHAFT SIZE	FRAME SIZE	GENERAL DIMENSIONS - INCHES															APPROX WT. (LBS.)
	TRAVEL	A	C	CC	D	E	F1	F2	N	L	"G" Minum Ax	N4	R	S	W	H	
1/2" THRU 1"	1TM3		13-1/2	12-1/2						14-1/2							6.5
	1TM6		16-1/2	15-1/2						17-1/2							7.5
	1TM9	2-1/16	19-1/2	18-1/2	2-3/4	1-3/4	3/8	3/8	3/8	20-1/2	-	-	2-1/2	5/8	2-3/8	1-5/8	8.5
	1TM12		22-1/2	21-1/2						23-1/2							9
	1TM18		28-1/2	27-1/2						29-1/2							
1-1/16" THRU 1-15/16"	2TM6		20	19						21							13
	2TN9		23	22						24							14.5
	2TM12	2-7/8	26	25						27							16
	2TM18		32	31	3-1/2	2-1/4	1/2	3/8	1/2	33	-	-	3	3/4	3-3/8	2-3/8	18.5
	2TM24		38	37						39							21
	2TM30		44	43						45							27
	2TM36		50	49						51							31
2" THRU 2-7/16"	3TM9		25-1/2	24-1/4	3-3/4					27							23
	3TM12		28-1/2	27-1/4	3-3/4					30							25
	3TM18	3-7/16	34-1/2	33-1/4	3-3/4					36	1-3/4						28.5
	3TM24		40-1/2	39-1/4	3-3/4	2-1/2	5/8	1/2	5/8	42	2-1/2	1/2	3-1/2	1	3-1/2	2-13/16	32
	3TM30		46-1/2	45-1/4	4-1/2					48					4-1/2		45
	3TM36		52-1/2	51-1/4	4-1/2					54					4-1/2		50
2-1/2" THRU 2-15/16"	4TM12		30-1/4	29-1/2	4-3/4					32							36.5
	4TM18		36-1/4	35-1/2	4-3/4					38							41.5
	4TM24	3-7/8	42-1/4	41-1/2	4-3/4					44	1-3/4						46
	4TM30		48-1/4	-	5-1/2	3-1/2	3/4	5/8	3/4	50	/	5/8	4	1-1/8	5-1/2	4-13/16	60
	4TM36		54-1/4	53-1/2	5-1/2					56	2-3/4				5-1/2		66
	4TM48		66-1/4	65-1/2	5-1/2					58					5-1/2		78
3" THRU 3-7/16"	5TM9		30	29						32							49
	5TM12		33	32						35							53
	5TM18		39	38						41							59
	5TM24	4-3/4	45	44	5-1/2	4	3/4	5/8	7/8	47	2-1/8	5/8	4	1-1/8	5-1/2	5-13/16	65
	5TM30		51	50						53	/						71
	5TM36		57	56						59	3-1/4						77
	5TM48		63	62						71							90

HEAVY-DUTY TOP MOUNT



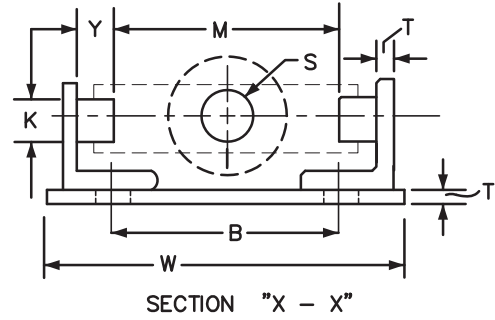
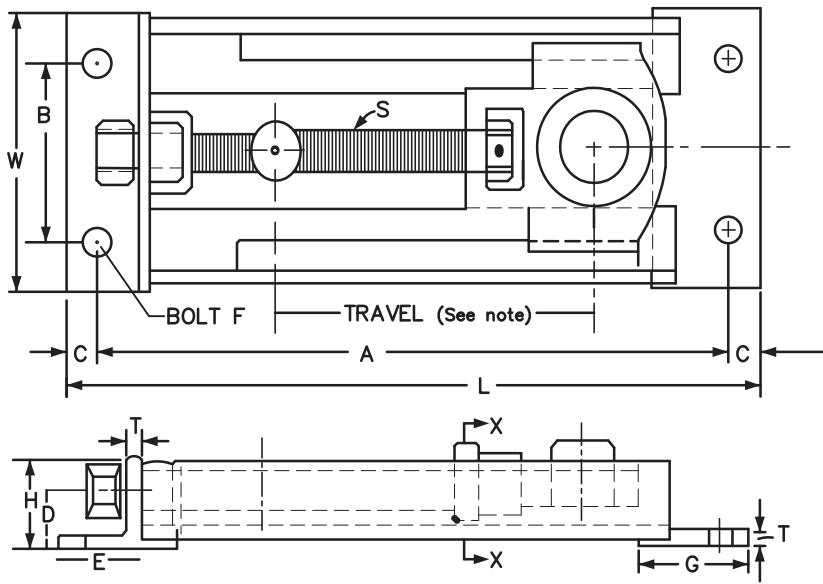
ALL HEAVY DUTY TAKE UP RAMES ARE EQUIPPED WITH HEAVY DUTY THREADED ADJUSTING SCREWS HEAVY DUTY TM SERIES EITHER SPLIT BLOCK SERIES SA 5 SERIES OR SPHERICAL SERIES SYS/ YSE OR EQUIVALENT TO

*NOTE: Travel of pillow block is indicated by last two digit (s) of frame
nl c fi l ll
l c l g n n
please inquire.



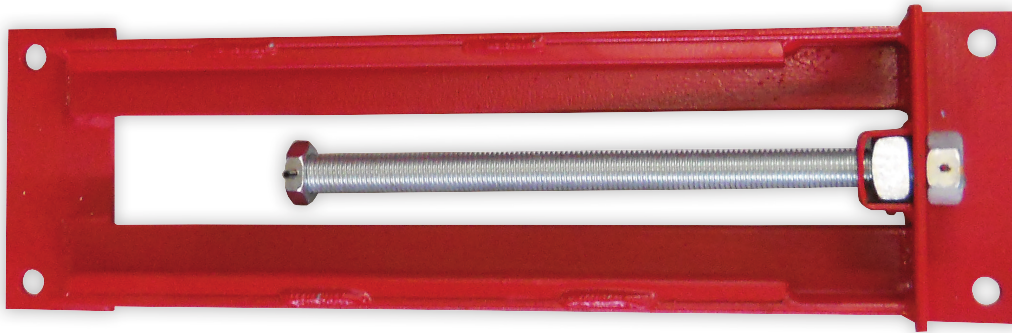
SHAFT SIZE	FRAME SIZE	GENERAL DIMENSIONS - INCHES														APPROX. WT. (LBS.)	
		TRAVEL	A	C	CC	D	E	F1	F2	N	L	G	N4	R	S		W
1-1/2" THRU 1-15/16"	2HDTM12			28						30							32
	2HDTM18			34						36							36
	2HDTM24	3-3/4	34-1/2	40	4	2-1/2	5/8	1/2	1/2	42	-	-	3	1	3-11/16	2-3/8	40
	2HDTM30		46							48							45
	2HDTM36		52							54							49
2" THRU 2-7/16"	3HDTM12			31						34							43
	3HDTM18			37						40							47
	3HDTM24	4-1/4	44	43	5	3-1/2	3/4	5/8	5/8	46	1-3/4	1/2	4	1-1/8	4-11/16	2-13/16	52
	3HDTM30		50	49						52	2-1/2						58
	3HDTM36		56	55						58							63
2-1/2" THRU 2-15/16"	4HDTM12			33						36							66
	4HDTM18			39						42							73
	4HDTM24	5	46	45	6	4	7/8	3/4	3/4	48	1-3/4	5/8	4	1-1/4	5-15/16	4-13/16	80
	4HDTM30		52	51						54	2-3/4						86
	4HDTM36		58	57						60							93
4HDTM48		70	69						72							106	
3" THRU 3-7/16"	5HDTM18			41						44							75
	5HDTM24			47						50							82
	5HDTM30	5-1/8	54	53	6	4	7/8	3/4	3/4	56	2-3/8	5/8	4	1-1/4	5-15/16	5-5/16	89
	5HDTM36		60	59						62	3-1/4						95
	5HDTM48		72	71						74							108
3-1/2" THRU 3-15/16"	6HDTM18			43						47							127
	6HDTM24			49						53							138
	6HDTM30	6	56	55	7	4-1/2	1	3/4	7/8	59	2	3/4	5	1-1/2	6-15/16	5-1/4	150
	6HDTM36		62	61						65	3-1/2						161
	6HDTM48		74	73						77							183
4" THRU 4-1/2"	7HDTM18			46						50							140
	7HDTM24			52						56							151
	7HDTM30	7	59	58	7	4-1/2	1	7/8	7/8	62	2-1/2	3/4	6	1-1/2	5-15/16	5-5/8	162
	7HDTM36		65	64						68	4						173
	7HDTM48		77	76						80							196
4-15/16" THRU 5"	8HDTM18			48						52							150
	8HDTM24			54						58							161
	8HDTM30	7	61	60	7	4-1/2	1	7/8	1	64	2-1/2	7/8	6	1-1/2	5-15/16	5-5/8	173
	8HDTM36		67	66						70	4-1/2						184
	8HDTM48		79	78						82							206
5-3/16" THRU 5-7/16"	9HDTM18			52						56							237
	9HDTM24			58						62							252
	9HDTM30	7-1/2	65	64	9	5-1/2	1-1/8	1	1-1/8	68	3	1	6	1-3/4	8-15/16	5-5/8	268
	9HDTM36		71	70						74	5						283
	9HDTM48		83	82	86					86							314
5-15/16" THRU 6"	10HDTM18			55						59							246
	10HDTM24			61						65							261
	10HDTM30	7-1/2	68	67	9	5-1/2	1-1/8	1	1-1/4	71	5-1/2	1-1/8	6	1-3/4	8-15/16	6-13/16	277
	10HDTM36		74	73						77							293
	10HDTM48		86	85						89							326

SIDE MOUNT



All dimensions in inches for frames with wide slot bearings.

SM un u CT & CST ng qu v l n



SHAFT SIZE	FRAME SIZE	GENERAL DIMENSIONS - INCHES																APPROX WT. (LBS.)
	TRAVEL	A	B	C	D	E	F	G	H	K	Y	L	M	R	S	T	W	
1/2" THRU 1"	SM106	12										13						6
	SM109	15	3	1/2	1	1-1/2	3/8	2	1-1/2	1/2	1/2	16	3-3/64	13/16	5/8	3/16	4-3/4	7
	SM112	18										19						8.5
1-1/16" THRU 1-7/16"	SM206	13-1/2										14-1/2						6.5
	SM209	16-1/2	3-1/2	1/2	1	1-1/2	1/2	2	1-1/2	1/2	1/2	17-1/2	3-35/64	13/16	3/4	3/16	5-1/4	7.5
	SM212	19-1/2										20-1/2						9
	SM218	25-1/2										26-1/2						12
1-1/2" THRU 1-15/16"	SM306	14-3/4										16						12
	SM309	17-3/4	4-1/2	5/8	1-3/16	2	1/2	2-1/2	2	5/8	5/8	19	4-3/64	15/16	7/8	1/4	6-1/4	14
	SM312	20-3/4										22						16.5
	SM318	26-3/4										28						21
2" THRU 2-7/16"	SM409	21-1/2										23						25
	SM412	24-1/2	6	3/4	1-3/16	2-1/2	5/8	3	3	1	1/2	26	5-11/64	1-1/2	1	5/16	7-1/2	28.5
	SM418	30-1/2										32						35
	SM424	36-1/2										38						42
2-1/2" THRU 2-15/16"	SM512	26-1/2										28-1/2						42
	SM518	32-1/2	7	1	1-7/8	3	3/4	4	3	1	3/4	34-1/2	6-3/64	1-1/2	1-1/4	3/8	8-3/4	51
	SM524	38-1/2										40-1/2						60
	SM530	44-1/2										46-1/2						69



BORE	PART #	PART #	PART #	PART #
RANGE OF 1/2 TO 1 1/2 5/8 11/16 3/4 7/8 15/16 1	SM106 SM106-UCT-201-8 SM106-UCT-202-10 SM106-UCT-203-11 SM106-UCT-204-12 SM106-UCT-205-14 SM106-UCT-205-15 SM106-UCT-205-16	SM109 SM109-UCT-201-8 SM109-UCT-202-10 SM109-UCT-203-11 SM109-UCT-204-12 SM109-UCT-205-14 SM109-UCT-205-15 SM109-UCT-205-16	SM112 SM112-UCT-201-8 SM112-UCT-202-10 SM112-UCT-203-11 SM112-UCT-204-12 SM112-UCT-205-14 SM112-UCT-205-15 SM112-UCT-205-16	
RANGE OF 1-11/16 TO 1-7/16 1-1/16 1-1/8 1-3/16 1-1/4 1-1/4 1-5/16 1-3/8 1-7/16	SM206 SM206-UCT-206-17 SM206-UCT-206-18 SM206-UCT-206-19 SM206-UCT-206-20 SM206-UCT-207-20 SM206-UCT-207-21 SM206-UCT-207-22 SM206-UCT-207-23	SM209 SM209-UCT-206-17 SM209-UCT-206-18 SM209-UCT-206-19 SM209-UCT-206-20 SM209-UCT-207-20 SM209-UCT-207-21 SM209-UCT-207-22 SM209-UCT-207-23	SM212 SM212-UCT-206-17 SM212-UCT-206-18 SM212-UCT-206-19 SM212-UCT-206-20 SM212-UCT-207-20 SM212-UCT-207-21 SM212-UCT-207-22 SM212-UCT-207-23	SM218 SM218-UCT-206-17 SM218-UCT-206-18 SM218-UCT-206-19 SM218-UCT-206-20 SM218-UCT-207-20 SM218-UCT-207-21 SM218-UCT-207-22 SM218-UCT-207-23
RANGE OF 1-1/2 TO 1-15/16 1-1/2 1-9/16 1-5/8 1-11/16 1-3/4 1-7/8 1-15/16	SM306 SM306-UCT-208-24 SM306-UCT-208-25 SM306-UCT-209-26 SM306-UCT-209-27 SM306-UCT-209-28 SM306-UCT-210-30 SM306-UCT-210-31	SM309 SM309-UCT-208-24 SM309-UCT-208-25 SM309-UCT-209-26 SM309-UCT-209-27 SM309-UCT-209-28 SM309-UCT-210-30 SM309-UCT-210-31	SM312 SM312-UCT-208-24 SM312-UCT-208-25 SM312-UCT-209-26 SM312-UCT-209-27 SM312-UCT-209-28 SM312-UCT-210-30 SM312-UCT-210-31	SM318 SM318-UCT-208-24 SM318-UCT-208-25 SM318-UCT-209-26 SM318-UCT-209-27 SM318-UCT-209-28 SM318-UCT-210-30 SM318-UCT-210-31
RANGE OF 2 TO 2-7/16 2 2-1/8 2-3/16 2-1/4 2-3/8 2-7/16	SM409 SM409-UCT-211-32 SM409-UCT-211-34 SM409-UCT-211-35 SM409-UCT-212-36 SM409-UCT-212-38 SM409-UCT-212-39	SM412 SM412-UCT-211-32 SM412-UCT-211-34 SM412-UCT-211-35 SM412-UCT-212-36 SM412-UCT-212-38 SM412-UCT-212-39	SM418 SM418-UCT-211-32 SM418-UCT-211-34 SM418-UCT-211-35 SM418-UCT-212-36 SM418-UCT-212-38 SM418-UCT-212-39	SM424 SM424-UCT-211-32 SM424-UCT-211-34 SM424-UCT-211-35 SM424-UCT-212-36 SM424-UCT-212-38 SM424-UCT-212-39
RANGE OF 2-1/2 TO 2-15/16 2-1/2 2-9/16 2-3/4 2-15/16	SM512 SM512-UCT-213-40 SM512-UCT-213-41 SM512-UCT-214-44 SM512-UCT-215-47	SM518 SM518-UCT-213-40 SM518-UCT-213-41 SM518-UCT-214-44 SM518-UCT-215-47	SM524 SM524-UCT-213-40 SM524-UCT-213-41 SM524-UCT-214-44 SM524-UCT-215-47	SM530 SM530-UCT-213-40 SM530-UCT-213-41 SM530-UCT-214-44 SM530-UCT-215-47